

**DISTRICT COURT - CSRBA**  
**Fifth Judicial District**  
**County of Twin Falls - State of Idaho**

**MAR 03 2022**

By \_\_\_\_\_ Clerk  
 \_\_\_\_\_ Deputy Clerk

IN THE DISTRICT COURT OF THE FIFTH JUDICIAL DISTRICT OF THE  
 STATE OF IDAHO, IN AND FOR THE COUNTY OF TWIN FALLS

In Re CSRBA ) PARTIAL DECREE PURSUANT TO I.R.C.P. 54(b)  
 Case No. 49576 ) FOR FEDERAL RESERVED  
 \_\_\_\_\_ ) WATER RIGHT NO. 94-09529A

NAME AND ADDRESS: UNITED STATES OF AMERICA ACTING THROUGH  
 USDA FOREST SERVICE  
 550 W FORT ST MSC 033  
 BOISE ID 83724

SOURCE: See Attachment 1, Column A TRIBUTARY: See Attachment 1, Column B

Sources are located on National Forest System Land in the Copper Creek-Lower Little North Fork Coeur d'Alene River subwatershed (HUC12 170103010604).

QUANTITY: The amount of water necessary to control and suppress forest fires.

PRIORITY DATE: 11/06/1906

POINT OF DIVERSION: See Attachment 1, Columns C through G

PURPOSE AND PERIOD OF USE:	<u>PURPOSE OF USE</u>	<u>PERIOD OF USE</u>
	Administrative-Fire Suppression	01/01 - 12/31

PLACE OF USE: National Forests in Idaho and the Kaniksu, Lolo and Kootenai National Forests in Montana.  
 See Attachment 2.

OTHER PROVISIONS NECESSARY FOR DEFINITION OR ADMINISTRATION OF THIS WATER RIGHT:

This right is limited to the intermittent diversion and use of water for the purpose of suppressing wildfires. This water right shall not be used as a basis to prevent the future appropriation of water.

This partial decree is subject to such general provisions necessary for the definition of the rights or for the efficient administration of the water rights as may be ultimately determined by the Court at a point in time no later than the entry of a final unified decree. Idaho Code § 42-1412(6).

RULE 54(b) CERTIFICATE

With respect to the issues determined by the above partial judgment it is hereby CERTIFIED, in accordance with Rule 54(b), I.R.C.P., that the court has determined that there is no just reason for delay of the entry of a final judgment and that the court has and does hereby direct that the above partial judgment is a final judgment upon which execution may issue and an appeal may be taken as provided by the Idaho Appellate Rules.

RECOMMENDATION

**MAR 03 2022**

*Eric J. Wildman*  
 \_\_\_\_\_  
**SPECIAL MASTER**

Eric J. Wildman  
 Presiding Judge of the  
 Coeur d'Alene-Spokane River Adjudication

# Attachment 1

	A	B	C	D	E	F	G
001	SOURCE NAME	TO TRIBUTARY	TOWNSHIP	RANGE	SECTION	QQ	SURVEY CODE AND NUMBER
002	Little North Fork Coeur d'Alene River	North Fork Coeur d'Alene River	49N	01E	03	NENW	L 7
003	Little North Fork Coeur d'Alene River	North Fork Coeur d'Alene River	49N	01E	03	NWNE	L 6
004	Little North Fork Coeur d'Alene River	North Fork Coeur d'Alene River	49N	01E	03	NWNW	L 8
005	Unnamed Stream	Little North Fork Coeur d'Alene River	49N	01E	03	NWNW	L 8
006	Unnamed Stream	Little North Fork Coeur d'Alene River	49N	01E	03	NWSE	
007	Little North Fork Coeur d'Alene River	North Fork Coeur d'Alene River	49N	01E	03	SESW	L 9
008	Unnamed Stream	Little North Fork Coeur d'Alene River	49N	01E	03	SESW	L 9
009	Unnamed Stream	Little North Fork Coeur d'Alene River	49N	01E	03	SESE	
010	Unnamed Stream	Little North Fork Coeur d'Alene River	49N	01E	03	SWSE	
011	Unnamed Stream	Little North Fork Coeur d'Alene River	49N	01E	03	SWSE	
012	Unnamed Stream	Little North Fork Coeur d'Alene River	49N	01E	03	SWSW	
013	Unnamed Stream	Owl Creek	49N	01E	06	NENW	L 3
014	Unnamed Stream	Owl Creek	49N	01E	06	NESW	
015	Unnamed Stream	Owl Creek	49N	01E	06	NWNE	L 2
016	Unnamed Stream	Owl Creek	49N	01E	06	SESW	
017	Unnamed Stream	Owl Creek	49N	01E	06	SESE	
018	Unnamed Stream	Little North Fork Coeur d'Alene River	49N	01E	09	NENE	
019	Unnamed Stream	Little North Fork Coeur d'Alene River	49N	01E	09	NENW	
020	Unnamed Stream	Little North Fork Coeur d'Alene River	49N	01E	09	NWNW	
021	Unnamed Stream	Little North Fork Coeur d'Alene River	49N	01E	09	SENE	
022	Unnamed Stream	Little North Fork Coeur d'Alene River	49N	01E	09	SENE	
023	Unnamed Stream	Little North Fork Coeur d'Alene River	49N	01E	09	SENE	
024	Unnamed Stream	Little North Fork Coeur d'Alene River	49N	01E	09	SWNE	
025	Unnamed Stream	Little North Fork Coeur d'Alene River	49N	01E	10	NESW	
026	Unnamed Stream	Little North Fork Coeur d'Alene River	49N	01E	10	NWNE	
027	Unnamed Stream	Little North Fork Coeur d'Alene River	49N	01E	10	NWNW	
028	Unnamed Stream	Little North Fork Coeur d'Alene River	49N	01E	10	NWSE	
029	Unnamed Stream	Little North Fork Coeur d'Alene River	49N	01E	10	NWSW	
030	Unnamed Stream	Little North Fork Coeur d'Alene River	49N	01E	10	NWSW	
031	Unnamed Stream	Little North Fork Coeur d'Alene River	49N	01E	10	SESW	
032	Unnamed Stream	Little North Fork Coeur d'Alene River	49N	01E	10	SWNE	
033	Unnamed Stream	Little North Fork Coeur d'Alene River	49N	01E	10	SWNW	
034	Unnamed Stream	Little North Fork Coeur d'Alene River	49N	01E	10	SWNW	
035	Unnamed Stream	Little North Fork Coeur d'Alene River	49N	01E	10	SWSW	
036	Unnamed Stream	Little North Fork Coeur d'Alene River	49N	01E	11		
037	Gimlet Creek	Little North Fork Coeur d'Alene River	49N	01W	01		
038	Unnamed Stream	Gimlet Creek	49N	01W	01		
039	Unnamed Stream	Gimlet Creek	49N	01W	01		
040	Unnamed Stream	Gimlet Creek	49N	01W	01		
041	Unnamed Stream	Gimlet Creek	49N	01W	02		
042	Canyon Creek	Little North Fork Coeur d'Alene River	50N	01E	07	NENW	
043	Unnamed Stream	Little North Fork Coeur d'Alene River	50N	01E	07	NESE	

# Attachment 1

	A	B	C	D	E	F	G
001	SOURCE NAME	TO TRIBUTARY	TOWNSHIP	RANGE	SECTION	QQ	SURVEY CODE AND NUMBER
044	Unnamed Stream	Little North Fork Coeur d'Alene River	50N	01E	07	NESW	
045	Canyon Creek	Little North Fork Coeur d'Alene River	50N	01E	07	NWNW	L 1
046	Unnamed Stream	Canyon Creek	50N	01E	07	NWNW	L 1
047	Little North Fork Coeur d'Alene River	North Fork Coeur d'Alene River	50N	01E	07	NWSE	
048	Unnamed Stream	Little North Fork Coeur d'Alene River	50N	01E	07	NWSE	
049	Unnamed Stream	Little North Fork Coeur d'Alene River	50N	01E	07	NWSE	
050	Unnamed Stream	Little North Fork Coeur d'Alene River	50N	01E	07	NWSE	
051	Unnamed Stream	Canyon Creek	50N	01E	07	NWSW	L 3
052	Canyon Creek	Little North Fork Coeur d'Alene River	50N	01E	07	SENW	
053	Little North Fork Coeur d'Alene River	North Fork Coeur d'Alene River	50N	01E	07	SESE	
054	Unnamed Stream	Little North Fork Coeur d'Alene River	50N	01E	07	SESE	
055	Unnamed Stream	Little North Fork Coeur d'Alene River	50N	01E	07	SESE	
056	Unnamed Stream	Little North Fork Coeur d'Alene River	50N	01E	07	SESE	
057	Unnamed Stream	Little North Fork Coeur d'Alene River	50N	01E	07	SESE	
058	Unnamed Stream	Canyon Creek	50N	01E	07	SWNW	L 2
059	Little North Fork Coeur d'Alene River	North Fork Coeur d'Alene River	50N	01E	07	SWSE	
060	Unnamed Stream	Little North Fork Coeur d'Alene River	50N	01E	07	SWSE	
061	Little North Fork Coeur d'Alene River	North Fork Coeur d'Alene River	50N	01E	08		
062	Unnamed Stream	Little North Fork Coeur d'Alene River	50N	01E	08		
063	Unnamed Stream	Little North Fork Coeur d'Alene River	50N	01E	08		
064	Unnamed Stream	Little North Fork Coeur d'Alene River	50N	01E	08		
065	Unnamed Stream	Little North Fork Coeur d'Alene River	50N	01E	08		
066	Unnamed Stream	Bumblebee Creek	50N	01E	13		
067	Bumblebee Creek	Little North Fork Coeur d'Alene River	50N	01E	14		
068	Little Tepee Creek	Little North Fork Coeur d'Alene River	50N	01E	15		
069	Homer Creek	Mineral Creek	50N	01E	18		
070	Unnamed Stream	Copper Creek	50N	01E	18		
071	Unnamed Stream	Little North Fork Coeur d'Alene River	50N	01E	18		
072	Unnamed Stream	Little North Fork Coeur d'Alene River	50N	01E	18		
073	Breakwater Creek	Little North Fork Coeur d'Alene River	50N	01E	20		
074	Little North Fork Coeur d'Alene River	North Fork Coeur d'Alene River	50N	01E	20		
075	Unnamed Stream	Little North Fork Coeur d'Alene River	50N	01E	20		
076	Unnamed Stream	Little North Fork Coeur d'Alene River	50N	01E	20		
077	Unnamed Stream	Little North Fork Coeur d'Alene River	50N	01E	20		
078	Unnamed Stream	Little North Fork Coeur d'Alene River	50N	01E	20		
079	Unnamed Stream	Little North Fork Coeur d'Alene River	50N	01E	20		
080	Unnamed Stream	Little North Fork Coeur d'Alene River	50N	01E	20		
081	Unnamed Stream	Little North Fork Coeur d'Alene River	50N	01E	20		
082	Unnamed Stream	Little North Fork Coeur d'Alene River	50N	01E	20		
083	Breakwater Creek	Little North Fork Coeur d'Alene River	50N	01E	21		
084	Little Tepee Creek	Little North Fork Coeur d'Alene River	50N	01E	21		
085	Unnamed Stream	Little North Fork Coeur d'Alene River	50N	01E	21		

# Attachment 1

	A	B	C	D	E	F	G
001	SOURCE NAME	TO TRIBUTARY	TOWNSHIP	RANGE	SECTION	QQ	SURVEY CODE AND NUMBER
086	Unnamed Stream	Little Tepee Creek	50N	01E	21		
087	Little Bumblebee Creek	Little North Fork Coeur d'Alene River	50N	01E	22		
088	Little Tepee Creek	Little North Fork Coeur d'Alene River	50N	01E	22		
089	Unnamed Stream	Little Bumblebee Creek	50N	01E	22		
090	Unnamed Stream	Little Bumblebee Creek	50N	01E	22		
091	Unnamed Stream	Little Tepee Creek	50N	01E	22		
092	Bumblebee Creek	Little North Fork Coeur d'Alene River	50N	01E	23		
093	Little Bumblebee Creek	Little North Fork Coeur d'Alene River	50N	01E	23		
094	Unnamed Stream	Bumblebee Creek	50N	01E	23		
095	Unnamed Stream	Bumblebee Creek	50N	01E	23		
096	Bumblebee Creek	Little North Fork Coeur d'Alene River	50N	01E	24		
097	Unnamed Stream	Bumblebee Creek	50N	01E	24		
098	Unnamed Stream	Bumblebee Creek	50N	01E	24		
099	Unnamed Stream	Bumblebee Creek	50N	01E	24		
100	Unnamed Stream	Bumblebee Creek	50N	01E	24		
101	Unnamed Stream	Bumblebee Creek	50N	01E	24		
102	Unnamed Stream	Bumblebee Creek	50N	01E	24		
103	Unnamed Stream	Bumblebee Creek	50N	01E	24		
104	Unnamed Stream	Bumblebee Creek	50N	01E	24		
105	Unnamed Stream	Bumblebee Creek	50N	01E	24		
106	Unnamed Stream	Bumblebee Creek	50N	01E	24		
107	Bumblebee Creek	Little North Fork Coeur d'Alene River	50N	01E	25		
108	Unnamed Stream	Bumblebee Creek	50N	01E	25		
109	Unnamed Stream	Bumblebee Creek	50N	01E	25		
110	Unnamed Stream	Bumblebee Creek	50N	01E	25		
111	Unnamed Stream	Bumblebee Creek	50N	01E	25		
112	Unnamed Stream	Bumblebee Creek	50N	01E	25		
113	Unnamed Stream	Bumblebee Creek	50N	01E	25		
114	Unnamed Stream	Little North Fork Coeur d'Alene River	50N	01E	25		
115	Little Bumblebee Creek	Little North Fork Coeur d'Alene River	50N	01E	26		
116	Unnamed Stream	Little Bumblebee Creek	50N	01E	26		
117	Unnamed Stream	Little Bumblebee Creek	50N	01E	26		
118	Unnamed Stream	Little Bumblebee Creek	50N	01E	26		
119	Unnamed Stream	Little Bumblebee Creek	50N	01E	26		
120	Unnamed Stream	Little Bumblebee Creek	50N	01E	26		
121	Unnamed Stream	Little Bumblebee Creek	50N	01E	26		
122	Unnamed Stream	Little Bumblebee Creek	50N	01E	26		
123	CoUnnamed Stream	Little North Fork Coeur d'Alene River	50N	01E	27		
124	Unnamed Stream	Little Bumblebee Creek	50N	01E	27		
125	Unnamed Stream	Little Bumblebee Creek	50N	01E	27		
126	Unnamed Stream	Little Bumblebee Creek	50N	01E	27		
127	Unnamed Stream	Little Bumblebee Creek	50N	01E	27		

# Attachment 1

	A	B	C	D	E	F	G
001	SOURCE NAME	TO TRIBUTARY	TOWNSHIP	RANGE	SECTION	QQ	SURVEY CODE AND NUMBER
128	Unnamed Stream	Little Tepee Creek	50N	01E	27		
129	Little Tepee Creek	Little North Fork Coeur d'Alene River	50N	01E	28		
130	Unnamed Stream	Little North Fork Coeur d'Alene River	50N	01E	28		
131	Unnamed Stream	Little North Fork Coeur d'Alene River	50N	01E	28		
132	Unnamed Stream	Little Tepee Creek	50N	01E	28		
133	Copper Creek	Little North Fork Coeur d'Alene River	50N	01E	30	SWSE	
134	Unnamed Stream	Little North Fork Coeur d'Alene River	50N	01E	32	NENE	
135	Unnamed Stream	Little North Fork Coeur d'Alene River	50N	01E	32	NWNE	
136	Little North Fork Coeur d'Alene River	North Fork Coeur d'Alene River	50N	01E	32	NWSE	
137	Unnamed Stream	Little North Fork Coeur d'Alene River	50N	01E	32	SENE	
138	Unnamed Stream	Little North Fork Coeur d'Alene River	50N	01E	32	SENE	
139	Little North Fork Coeur d'Alene River	North Fork Coeur d'Alene River	50N	01E	32	SWNE	
140	Unnamed Stream	Little North Fork Coeur d'Alene River	50N	01E	32	SWNE	
141	Unnamed Stream	Little North Fork Coeur d'Alene River	50N	01E	32	SWNE	
142	Unnamed Stream	Little North Fork Coeur d'Alene River	50N	01E	32	SWNE	
143	Little North Fork Coeur d'Alene River	North Fork Coeur d'Alene River	50N	01E	32	SWSE	L 2
144	CoUnnamed Stream	Little North Fork Coeur d'Alene River	50N	01E	34		
145	Little North Fork Coeur d'Alene River	North Fork Coeur d'Alene River	50N	01E	34		
146	Unnamed Stream	Little Bumblebee Creek	50N	01E	34		
147	Unnamed Stream	Little North Fork Coeur d'Alene River	50N	01E	34		
148	Unnamed Stream	Little North Fork Coeur d'Alene River	50N	01E	34		
149	Unnamed Stream	Little North Fork Coeur d'Alene River	50N	01E	34		
150	Unnamed Stream	Little North Fork Coeur d'Alene River	50N	01E	34		
151	Unnamed Stream	Little North Fork Coeur d'Alene River	50N	01E	34		
152	Unnamed Stream	Canyon Creek	50N	01W	10	NESE	
153	Canyon Creek	Little North Fork Coeur d'Alene River	50N	01W	10	NESW	
154	Canyon Creek	Little North Fork Coeur d'Alene River	50N	01W	10	SENE	
155	Unnamed Stream	Canyon Creek	50N	01W	10	SENE	
156	Canyon Creek	Little North Fork Coeur d'Alene River	50N	01W	10	SENW	
157	Unnamed Stream	Canyon Creek	50N	01W	12	NESE	
158	John Creek	Mineral Creek	50N	01W	12	NESW	
159	Unnamed Stream	Canyon Creek	50N	01W	12	SENE	
160	John Creek	Mineral Creek	50N	01W	12	SESW	
161	Canyon Creek	Little North Fork Coeur d'Alene River	50N	01W	12	SWNW	
162	Unnamed Stream	John Creek	50N	01W	14	NENE	
163	Unnamed Stream	John Creek	50N	01W	14	NENW	
164	Unnamed Stream	John Creek	50N	01W	14	NESE	
165	Mineral Creek	Copper Creek	50N	01W	14	NESW	
166	Unnamed Stream	John Creek	50N	01W	14	NWNE	
167	Mineral Creek	Copper Creek	50N	01W	14	NWNW	
168	Mineral Creek	Copper Creek	50N	01W	14	NWSW	
169	Unnamed Stream	John Creek	50N	01W	14	SENW	

# Attachment 1


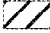



	A	B	C	D	E	F	G
001	SOURCE NAME	TO TRIBUTARY	TOWNSHIP	RANGE	SECTION	QQ	SURVEY CODE AND NUMBER
170	Unnamed Stream	John Creek	50N	01W	14	SWNE	
171	Unnamed Stream	John Creek	50N	01W	14	SWNE	
172	Mineral Creek	Copper Creek	50N	01W	14	SWNW	
173	Fisher Creek	Copper Creek	50N	01W	15		
174	Mineral Creek	Copper Creek	50N	01W	15		
175	Stoney Creek	Copper Creek	50N	01W	21		
176	Unnamed Stream	Stoney Creek	50N	01W	21		
177	Fisher Creek	Copper Creek	50N	01W	22		
178	Stoney Creek	Copper Creek	50N	01W	22		
179	Unnamed Stream	Copper Creek	50N	01W	22		
180	Unnamed Stream	Fisher Creek	50N	01W	22		
181	Unnamed Stream	Fisher Creek	50N	01W	22		
182	Unnamed Stream	Stoney Creek	50N	01W	22		
183	Unnamed Stream	Stoney Creek	50N	01W	22		
184	Homer Creek	Mineral Creek	50N	01W	24	NENE	
185	Homer Creek	Mineral Creek	50N	01W	24	NESE	
186	Mineral Creek	Copper Creek	50N	01W	24	NESE	
187	Mineral Creek	Copper Creek	50N	01W	24	NESW	
188	John Creek	Mineral Creek	50N	01W	24	NWSE	
189	Mineral Creek	Copper Creek	50N	01W	24	NWSE	
190	Copper Creek	Little North Fork Coeur d'Alene River	50N	01W	24	SESE	
191	Homer Creek	Mineral Creek	50N	01W	24	SESE	
192	Mineral Creek	Copper Creek	50N	01W	24	SESE	
193	Copper Creek	Little North Fork Coeur d'Alene River	50N	01W	24	SESW	
194	John Creek	Mineral Creek	50N	01W	24	SWNE	
195	Mineral Creek	Copper Creek	50N	01W	24	SWNW	
196	Copper Creek	Little North Fork Coeur d'Alene River	50N	01W	24	SWSE	
197	Copper Creek	Little North Fork Coeur d'Alene River	50N	01W	26		
198	Fisher Creek	Copper Creek	50N	01W	26		
199	Stoney Creek	Copper Creek	50N	01W	26		
200	Unnamed Stream	Copper Creek	50N	01W	26		
201	Unnamed Stream	Copper Creek	50N	01W	26		
202	Unnamed Stream	Copper Creek	50N	01W	26		
203	Unnamed Stream	Copper Creek	50N	01W	26		
204	Unnamed Stream	Fisher Creek	50N	01W	26		
205	Stoney Creek	Copper Creek	50N	01W	27	NENE	
206	Unnamed Stream	Copper Creek	50N	01W	27	NENE	
207	Unnamed Stream	Stoney Creek	50N	01W	27	NENW	
208	Unnamed Stream	Stoney Creek	50N	01W	27	NWNW	
209	Unnamed Stream	Stoney Creek	50N	01W	27	NWSW	
210	Unnamed Stream	Stoney Creek	50N	01W	27	NWSW	
211	Copper Creek	Little North Fork Coeur d'Alene River	50N	01W	27	SESE	

# Attachment 1

	A	B	C	D	E	F	G
001	SOURCE NAME	TO TRIBUTARY	TOWNSHIP	RANGE	SECTION	QQ	SURVEY CODE AND NUMBER
212	Unnamed Stream	Copper Creek	50N	01W	27	SESE	
213	Unnamed Stream	Stoney Creek	50N	01W	27	SWNW	
214	Unnamed Stream	Stoney Creek	50N	01W	27	SWNW	
215	Unnamed Stream	Copper Creek	50N	01W	27	SWSE	
216	Unnamed Stream	Stoney Creek	50N	01W	27	SWSW	
217	Unnamed Stream	Stoney Creek	50N	01W	28		
218	Unnamed Stream	Stoney Creek	50N	01W	28		
219	Unnamed Stream	Stoney Creek	50N	01W	28		
220	Unnamed Stream	Stoney Creek	50N	01W	28		
221	Unnamed Stream	Copper Creek	50N	01W	34	NENW	
222	Unnamed Stream	Copper Creek	50N	01W	34	NESE	
223	Unnamed Stream	Copper Creek	50N	01W	34	NESW	
224	Unnamed Stream	Copper Creek	50N	01W	34	NWSE	
225	Unnamed Stream	Copper Creek	50N	01W	34	SENW	
226	Unnamed Stream	Curran Creek	50N	01W	34	SWNW	
227	Unnamed Stream	Bumblebee Creek	50N	02E	18		
228	Unnamed Stream	Bumblebee Creek	50N	02E	19	NESW	
229	Unnamed Stream	Bumblebee Creek	50N	02E	19	NWSW	L 3
230	Unnamed Stream	Bumblebee Creek	50N	02E	19	NWSW	L 3
231	Unnamed Stream	Bumblebee Creek	50N	02E	19	SESE	
232	Unnamed Stream	Bumblebee Creek	50N	02E	19	SESW	
233	Unnamed Stream	Bumblebee Creek	50N	02E	19	SWSE	
234	Unnamed Stream	Bumblebee Creek	50N	02E	19	SWSE	
235	Unnamed Stream	Bumblebee Creek	50N	02E	19	SWSW	L 4
236	Unnamed Stream	Bumblebee Creek	50N	02E	30		
237	Unnamed Stream	Bumblebee Creek	50N	02E	30		
238	Unnamed Stream	Bumblebee Creek	50N	02E	30		
239	Unnamed Stream	Bumblebee Creek	50N	02E	30		
240	Unnamed Stream	Bumblebee Creek	50N	02E	31	NWNW	L 1
241	Unnamed Stream	Bumblebee Creek	50N	02E	31	NWSW	L 3
242	Unnamed Stream	Bumblebee Creek	50N	02E	31	SENW	
243	Unnamed Stream	Bumblebee Creek	50N	02E	31	SWNW	L 2
244	Unnamed Pond	Little North Fork Coeur d'Alene River	50N	01E	20		
245	Unnamed Pond	Sink	50N	01E	32		
246	Unnamed Pond	John Creek	50N	01W	24		
247	Unnamed Spring	Sink	50N	01E	15	SWSE	

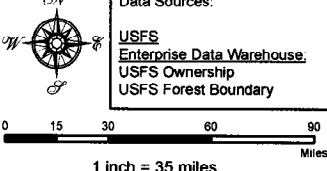
Attachment 2  
 Place of Use Map Fire Suppression - Water Right No. 94-09529A  
 National Forests in Idaho and the Kaniksu, Lolo and Kootenai NF in Montana

**Key to Features**

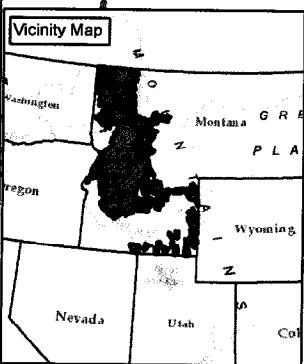
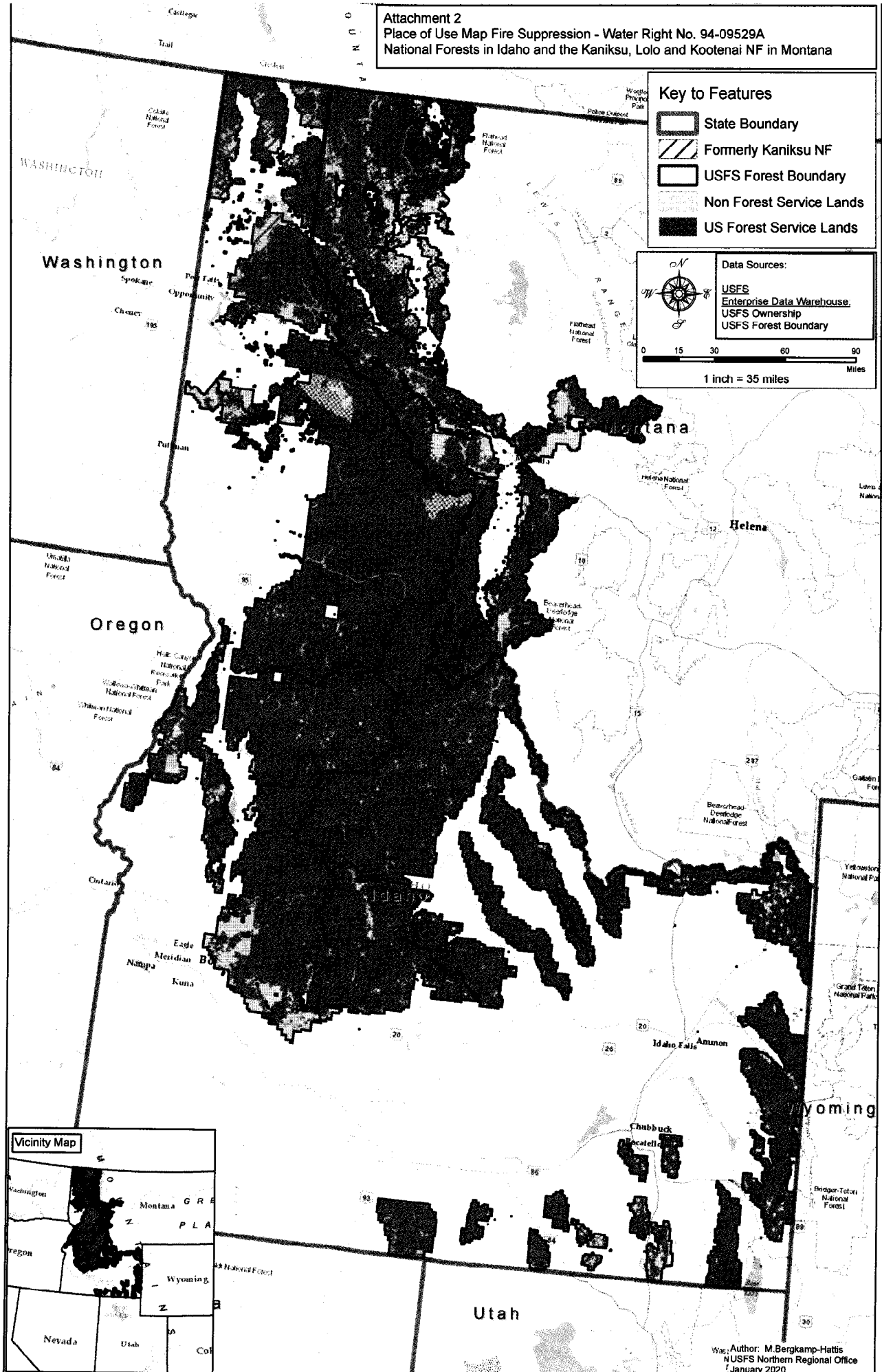
-  State Boundary
-  Formerly Kaniksu NF
-  USFS Forest Boundary
-  Non Forest Service Lands
-  US Forest Service Lands

**Data Sources:**

- USFS
- Enterprise Data Warehouse
- USFS Ownership
- USFS Forest Boundary



0 15 30 60 90 Miles  
 1 inch = 35 miles



Map Author: M. Bergkamp-Hattis  
 USFS Northern Regional Office  
 January 2020